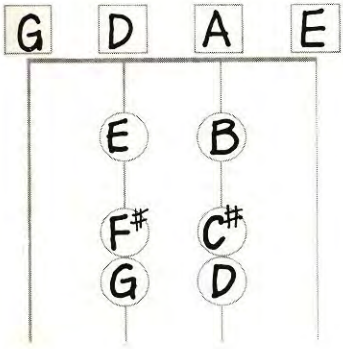


37. FINGERING CHART

Write the name of the note that is played at the place of each circle on the fingering chart below. Place the sharps from the diagram on the staff to form the key signature of D Major.



Questions:
 The key of D Major has **2** sharps.
 The first sharp is **F#**.
 The second sharp is **C#**.
 E to F# is a **WHOLE** step.
 F# to G is a **HALF** step.
 G to A is a **WHOLE** step.
 A to B is a **WHOLE** step.
 B to C# is a **HALF** step.
 C# to D is a **HALF** step.

38. NAME NOTES/DRAW NOTES

1 Write the name of each note on the blank provided. 2 Draw the notes found in a D major scale on the staff as requested. Use quarter and half notes. Be sure each stem points in the correct direction.



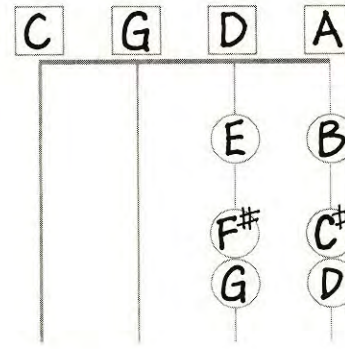
39. KEYBOARD STUDY

Write the letters on the keys for the D Major scale. Show proper relationship to middle C.



37. FINGERING CHART

Write the name of the note that is played at the place of each circle on the fingering chart below. Place the sharps from the diagram on the staff to form the key signature of D Major.



Questions:
 The key of D Major has **2** sharps.
 The first sharp is **F#**.
 The second sharp is **C#**.
 E to F# is a **WHOLE** step.
 F# to G is a **HALF** step.
 G to A is a **WHOLE** step.
 A to B is a **WHOLE** step.
 B to C# is a **HALF** step.
 C# to D is a **HALF** step.

38. NAME NOTES/DRAW NOTES

1 Write the name of each note on the blank provided. 2 Draw the notes found in a D major scale on the staff as requested. Use quarter and half notes. Be sure each stem points in the correct direction.



39. KEYBOARD STUDY

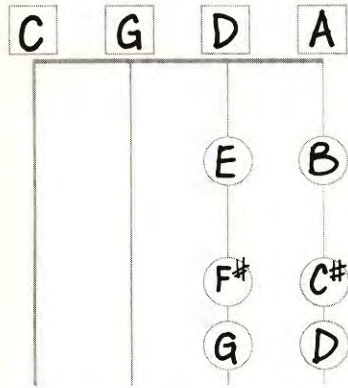
Write the letters on the keys for the D Major scale. Show proper relationship to middle C.



VIOLIN VIOLA
 CELLO STRING BASS

37. FINGERING CHART

Write the name of the note that is played at the place of each circle on the fingering chart below. Place the sharps from the diagram on the staff to form the key signature of D Major.



Questions:
 The key of D Major has **2** sharps.
 The first sharp is **F#**.
 The second sharp is **C#**.
 E to F# is a **WHOLE** step.
 F# to G is a **HALF** step.
 G to A is a **WHOLE** step.
 A to B is a **WHOLE** step.
 B to C# is a **HALF** step.
 C# to D is a **HALF** step.

38. NAME NOTES/DRAW NOTES

1 Write the name of each note on the blank provided. 2 Draw the notes found in a D major scale on the staff as requested. Use quarter and half notes. Be sure each stem points in the correct direction.



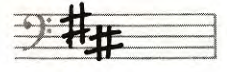
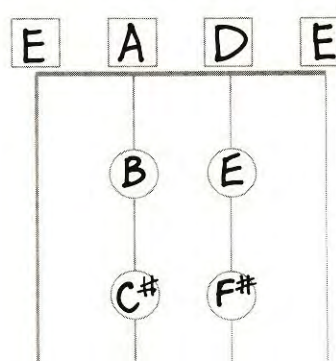
39. KEYBOARD STUDY

Write the letters on the keys for the D Major scale. Show proper relationship to middle C.



37. FINGERING CHART

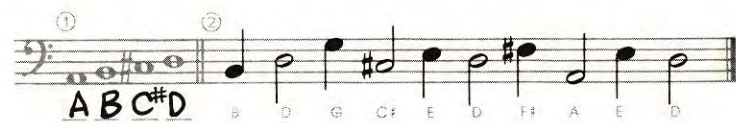
Write the name of the note that is played at the place of each circle on the fingering chart below. Place the sharps from the diagram on the staff to form the key signature of D Major.



Questions:
 The key of D Major has **2** sharps.
 The first sharp is **F#**.
 The second sharp is **C#**.
 E to F# is a **WHOLE** step.
 F# to G is a **HALF** step.
 G to A is a **WHOLE** step.
 A to B is a **WHOLE** step.
 B to C# is a **HALF** step.
 C# to D is a **HALF** step.

38. NAME NOTES/DRAW NOTES

1 Write the name of each note on the blank provided. 2 Draw the notes found in a D major scale on the staff as requested. Use quarter and half notes. Be sure each stem points in the correct direction.



39. KEYBOARD STUDY

Write the letters on the keys for the D Major scale. Show proper relationship to middle C.

