

To the Chancel Choir of Holy Shepherd Lutheran Church, Lakewood, Colorado,
Mark Feigal, Director, in celebration of their new sanctuary.

The House of the Lord

SATB Organ, Piano, Handbells, Conga

From Psalm 113 and 118

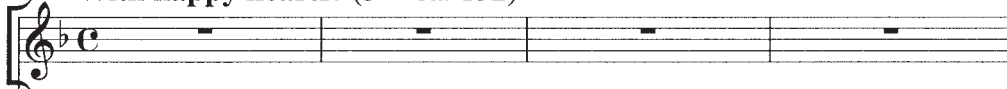
Bradley Ellingboe

Handbells:



With happy hearts! (♩ = ca. 132)

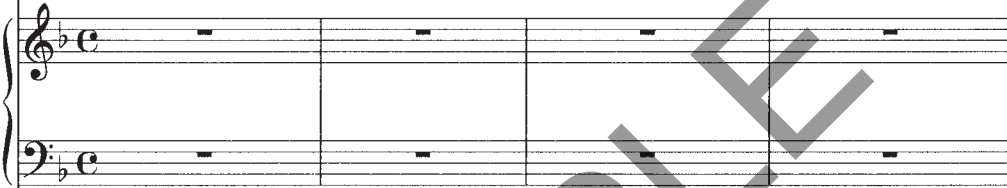
Handbells



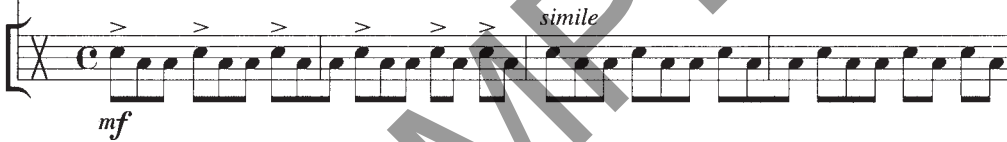
Piano



Organ



Conga



5 *mf*

simile

Pungent

mf

Detailed description: This section contains measures 5 through 8 of the piece. It features five staves: a vocal line (treble clef, one flat) starting with a measure rest and a *mf* dynamic; a piano accompaniment (treble clef, one flat) with a *simile* marking; an organ part (grand staff, one flat) with a *Pungent* marking and *mf* dynamic; and a conga part (single line, one flat) continuing its rhythmic pattern.

Duration: ca. 3:15

© 2000 Neil A. Kjos Music Company, 4380 Jutland Drive, San Diego, California 92117.
International copyright secured. All rights reserved. Printed in U.S.A.

Warning! This publication is protected by copyright law. To copy or reproduce it by any method is an infringement of the copyright law. Anyone who reproduces copyrighted matter is subject to substantial penalties and assessments for each infringement.

9

Handbells

Musical notation for Handbells, measures 9-12. The notation is on a single treble clef staff with a key signature of one flat (B-flat) and a 7/8 time signature. It features a sequence of chords and single notes.

Women unison

Women unison vocal line, measures 9-12. The notation is on a treble clef staff with a 7/8 time signature. It begins with a melodic phrase and ends with a sustained note.

mf Praise the Lord!

Praise, O ser-vants of the Lord!

Men unison

Men unison vocal line, measures 9-12. The notation is on a bass clef staff with a 7/8 time signature. It features a rhythmic accompaniment of eighth notes.

Musical notation for Handbells, measures 9-12 (continued). This section shows a more complex rhythmic pattern with eighth notes and accents.

9

Piano accompaniment for measures 9-12. The notation is on grand staff (treble and bass clefs) with a 7/8 time signature. It provides harmonic support for the vocal parts.

Musical notation for Handbells, measures 9-12 (continued). This section shows a rhythmic pattern with eighth notes and accents.

13

Musical notation for Handbells, measures 13-16. The notation is on a single treble clef staff with a key signature of one flat and a 9/8 time signature. It features a sequence of chords and single notes.

divisi

Women unison vocal line, measures 13-16. The notation is on a treble clef staff with a 9/8 time signature. It features a melodic phrase that transitions to a unison section.

unison

Praise the name of the Lord the name of the Lord.

divisi

Men unison vocal line, measures 13-16. The notation is on a bass clef staff with a 9/8 time signature. It features a rhythmic accompaniment of eighth notes.

unison

Musical notation for Handbells, measures 13-16. The notation is on a single treble clef staff with a key signature of one flat and a 9/8 time signature. It features a sequence of chords and single notes.

13

Piano accompaniment for measures 13-16. The notation is on grand staff (treble and bass clefs) with a 9/8 time signature. It provides harmonic support for the vocal parts.

Piano accompaniment for measures 13-16 (continued). This section shows a more complex rhythmic pattern with eighth notes and accents.

Musical notation for Handbells, measures 13-16. The notation is on a single treble clef staff with a key signature of one flat and a 9/8 time signature. It features a sequence of chords and single notes.