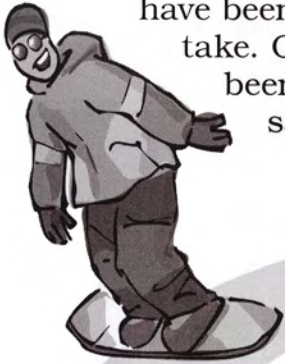


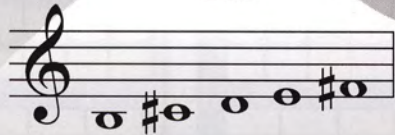


SNOW DAY!

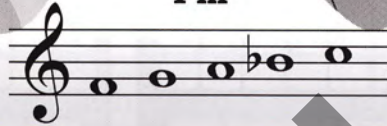
School has been cancelled . . . let's go snowboarding! These moguls have been marked with five-finger patterns showing which course to take. Only board those moguls with five-finger patterns that have been marked correctly and choose the jump at the end that is the same number of moguls you have boarded.



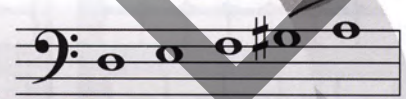
Bm



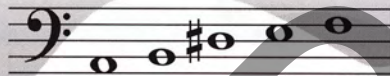
Fm



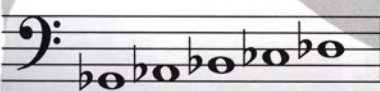
DM



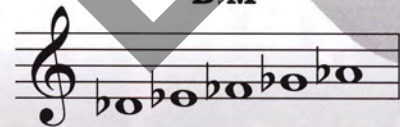
AM



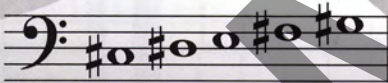
G♭M



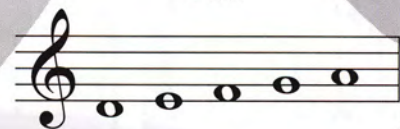
D♭M



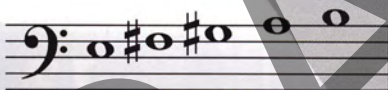
C♯m



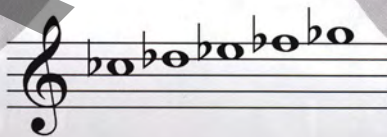
Dm



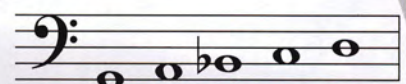
E♭M



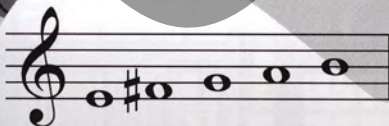
C♭M



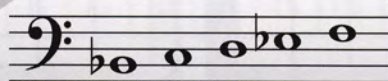
Gm



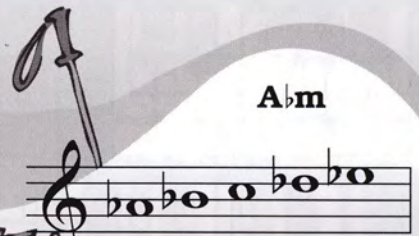
Em



B♭m



A♭m



7

8

9