

12. WHO IS IT?

Welsh Folk Song



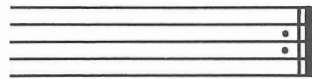
Hel - lo there! Who is it? Can you guess who it is?



Hel - lo there! Who is it? Hel - lo there! It is me!



REPEAT SIGN



Play the previous section of music again.

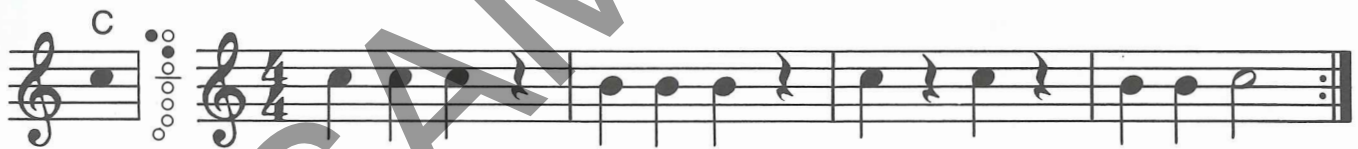
13. AU CLAIR DE LA LUNE

French Folk Song



★ Repeat to the beginning.

14. C-SAW



15. JUBA

American Folk Song



Ju - ba this and Ju - ba that, Ju - ba saw a yel - low cat.



Ju - ba up and Ju - ba down, Ju - ba run - ning all a - round.

16. TRICKY RHYTHM



17. NORWEGIAN MELODY

Folk Song

Musical notation for 'Norwegian Melody' in 4/4 time. The melody consists of two staves of music. The first staff starts with a treble clef and a 4/4 time signature. The notes are: G4, A4, B4, C5, B4, A4, G4, F4, E4, D4, C4. The second staff continues the melody with notes: B3, A3, G3, F3, E3, D3, C3, B2, A2, G2, F2, E2, D2, C2.

18. RAVE REVIEW

Musical notation for 'Rave Review' in 4/4 time. The melody consists of one staff of music. The notes are: G4, A4, B4, C5, B4, A4, G4, F4, E4, D4, C4.

★ Write in the note names before you play.

Musical notation for 'Rave Review' with a practice line. The melody is shown on a staff, followed by a dashed line for writing note names.

19. IN HARMONY

Duet

Musical notation for 'In Harmony' in 4/4 time, presented as a duet. Part A (top staff) and Part B (bottom staff) play together. The lyrics are: Fun for you and me, As we play in har-mo-ny!



20. ARE YOU READY FOR A NEW NOTE?

Musical notation for 'Are You Ready for a New Note?' in 4/4 time. The melody starts with a treble clef and a 4/4 time signature. The notes are: G4, A4, B4, C5, B4, A4, G4, F4, E4, D4, C4.

21. LEAPIN' LIZARDS

Musical notation for 'Leapin' Lizards' in 4/4 time. The melody consists of one staff of music. The notes are: G4, A4, B4, C5, B4, A4, G4, F4, E4, D4, C4.

22. LITTLE ROBIN RED BREAST

Traditional



Rob-in, rob - in red breast, Rob-in, rob - in dear,



Rob-in sing so sweet-ly, In the fall - ing of the year.

THEORY
GAME

23. RHYTHM RIDDLE



★ Draw in the bar lines before you play.

24. AURA LEE

G.R. Poulton



Aur - a Lee, — Aur - a Lee, Maid with gol - den hair, —



Sun-shine came a - long with thee, Swal - lows in the air.

25. ODE TO JOY

Ludwig van Beethoven

THEORY
GAME

26. NOTE DECODER



— — — H R — — OR — — R STU — — NT M — K — S TH — — R — — — !

★ Write in the note names to complete the secret message.



WHOLE NOTE	= four beats in $\frac{4}{4}$ time	<div style="display: flex; align-items: center; justify-content: center;"> <div style="font-size: 2em; margin-right: 10px;">4 4</div> <table border="1" style="border-collapse: collapse;"> <tr><td style="text-align: center;"></td></tr> <tr><td style="text-align: center;">—</td></tr> <tr><td style="text-align: center;"></td></tr> <tr><td style="text-align: center;"></td></tr> <tr><td style="text-align: center;">1 2 3 4</td></tr> </table> </div>		—			1 2 3 4
—							
1 2 3 4							
WHOLE REST	= four beats of silence in $\frac{4}{4}$ time						
		counting					

27. WHOLE LOTTA COUNTIN'

★ Write in the counting and clap the rhythms before you play.

28. PLAY TOGETHER

Elledge-Duet

A.	,	,	,
Play	to	geth	er,
	-	-	-
			★ Keep going to next A. line.
B.	,	,	,
			★ Keep going to next B. line.9

Play to- geth-er rid - ing hors - es, Play to- geth- er climb- ing trees,

A.	,	,	,
Play to- geth- er	mak- ing mu- sic,	Play to- geth- er,	you and me!
B.	,	,	,
Play	to	geth - er,	you and me!