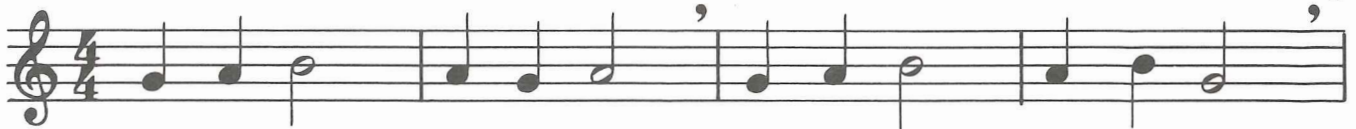


12. WHO IS IT?

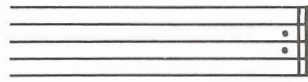
Welsh Folk Song



Hel - lo there! Who is it? Can you guess who it is?



Hel - lo there! Who is it? Hel - lo there! It is me!

**REPEAT SIGN**

Play the previous section of music again.

13. AU CLAIR DE LA LUNE

French Folk Song



★ Repeat to the beginning.



14. C-SAW



15. JUBA

American Folk Song



Ju - ba this and Ju - ba that, Ju - ba saw a yel - low cat.



Ju - ba up and Ju - ba down, Ju - ba run - ning all a - round.

16. TRICKY RHYTHM



17. NORWEGIAN MELODY

Folk Song



18. RAVE REVIEW



★ Write in the note names before you play.



19. IN HARMONY

Duet

Musical notation for 'In Harmony' in 4/4 time, presented as a duet. It features two staves, A and B, with lyrics written below staff A. The melody consists of two staves of music. The first staff starts with a treble clef and a 4/4 time signature. The notes are: G4 (quarter), A4 (quarter), B4 (quarter), C5 (quarter), B4 (quarter), A4 (quarter), G4 (quarter), F#4 (quarter), E4 (half). The second staff continues with: D4 (half), C4 (half), B3 (quarter), A3 (quarter), G3 (quarter), F#3 (quarter), E3 (half). The lyrics are: Fun for you and me, As we play in har-mo-ny!



20. ARE YOU READY FOR A NEW NOTE?



21. LEAPIN' LIZARDS



22. LITTLE ROBIN RED BREAST

Traditional



Rob-in, rob - in red breast, Rob-in, rob - in dear,



Rob-in sing so sweet-ly, In the fall - ing of the year.



THEORY GAME

23. RHYTHM RIDDLE



★ Draw in the bar lines before you play.

24. AURA LEE

G.R. Poulton



Aur - a Lee, — Aur - a Lee, Maid with gol - den hair, —



Sun - shine came a - long with thee, Swal - lows in the air.

25. ODE TO JOY

Ludwig van Beethoven



THEORY GAME

26. NOTE DECODER



— — — H R — — OR — — R STU — — NT M _ K _ S TH — — R — — — !

★ Write in the note names to complete the secret message.



WHOLE NOTE	○ = four beats in $\frac{4}{4}$ time	<div style="text-align: center;"> $\frac{4}{4}$ 4 4 </div> <div style="text-align: center;">counting</div> <table border="1" style="margin-left: auto; margin-right: auto;"> <tr><td>○</td></tr> <tr><td>—</td></tr> <tr><td>♪ —</td></tr> <tr><td>♪ ♪ ♪ ♪</td></tr> <tr><td>1 2 3 4</td></tr> </table>	○	—	♪ —	♪ ♪ ♪ ♪	1 2 3 4
○							
—							
♪ —							
♪ ♪ ♪ ♪							
1 2 3 4							
WHOLE REST	— = four beats of silence in $\frac{4}{4}$ time						
○ = or							

27. WHOLE LOTTA COUNTIN'

★ Write in the counting and clap the rhythms before you play.

28. PLAY TOGETHER

Elledge-Duet

A.	,	,	,
Play	to	geth	er,
	-	-	
			★ Keep going to next A. line.
B.	,	,	,
			★ Keep going to next B. line.

Play to- geth-er rid - ing hors - es, Play to- geth- er climb- ing trees,

A.	,	,	,
Play to - geth - er	mak - ing mu - sic,	Play to - geth - er,	you and me!
B.	,	,	,
Play	to	geth - er,	you and me!