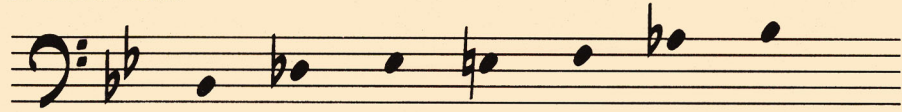


IMPROVISATION STUDIES - JAMMIN' WITH CHARLIE

BLUES SCALE

B \flat Blues Scale



whole steps: $\lfloor 1\frac{1}{2} \rfloor \lfloor 1 \rfloor \lfloor \frac{1}{2} \rfloor \lfloor \frac{1}{2} \rfloor \lfloor 1\frac{1}{2} \rfloor \lfloor 1 \rfloor$

JAMMIN' WITH CHARLIE is based on the **12-bar blues**, the most common musical form in jazz. The **blues scale** is a good starting point when improvising over tunes based on the blues.

The series of chords that accompanies a melody is called a **chord progression**. The basic **blues chord progression** (or simply **blues progression**) is a series of three chords played over 12 bars. Any note of the blues scale can be played over any chord of the blues progression in the same key as the scale.

Rock $\text{♩} = 116-120$

A

- ▶ As you play, listen to how each note of the blues scale sounds with the blues progression played by the rest of the rhythm section. Are certain notes of the scale more "bluesy" than others?
- ▶ Play exercise A beginning with your 1st finger on the A string, 1st fret. You can play the entire B \flat blues scale in this position.

Rock $\text{♩} = 116-120$

A ACCOMPANIMENT GROOVE

- ▶ Use this ACCOMPANIMENT GROOVE with JAMMIN' WITH CHARLIE IMPROVISATION STUDY A.