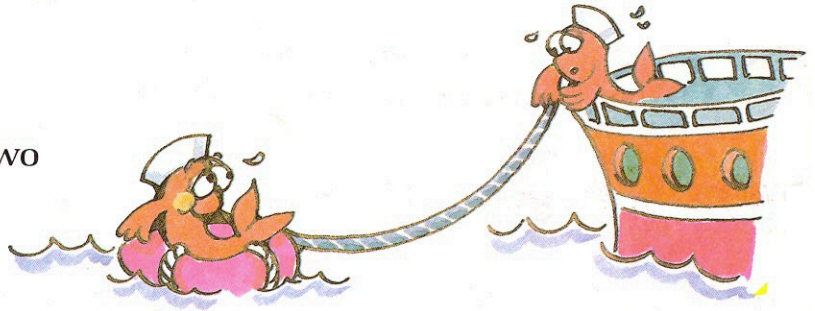


The Slur

The **slur** is a curved line over or under two or more **different** notes that are to be played legato (smooth, connected).



27. Draw a slur **over** these notes. Play these notes legato.



Draw a slur **under** these notes. Play these notes legato.



28. Draw a slur **under** these notes. Play these notes legato.

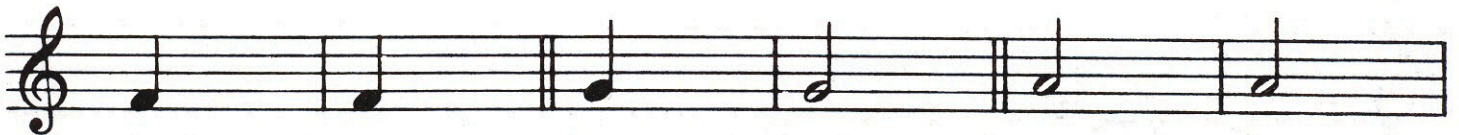


The Tie

The **tie** is a curved line which connects notes that are on the **same** line or space. Play the first note and hold it for the value of both notes.



29. Draw a tie to these pairs of same notes. Write the total number of counts for the tied notes on the lines below.



2 counts _____

