

ABOVE AND BELOW THE GRAND STAFF

The notes you learned in **EXPLORATIONS IN MUSIC, Books 1, 2, and 3** are shown on this grand staff.

F G A B C D E F G A B C D E F G A B C D E F G

LEDGER LINES are used when writing notes that are above or below the staff.



1. Discover the letter names of the notes located on ledger lines in the following example. Remember that you go **forward** in the music alphabet when going **up** the staff, and **backward** in the music alphabet when going **down** the staff.

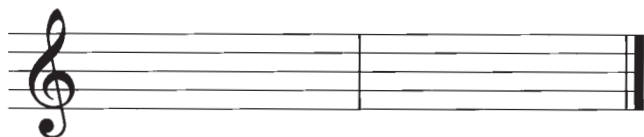
F _____ E _____

G _____ A _____

2. Identify the music “words” that use only notes above and below the staff.



3. Now it is your turn to write notes **only on ledger lines** to match the words below.



D E A D B A B E

Write above the staff.

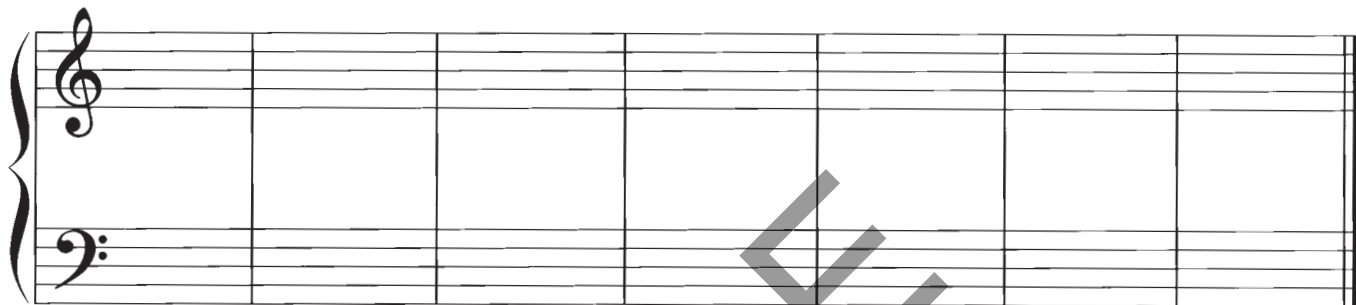


B E D C A B

Write below the staff.



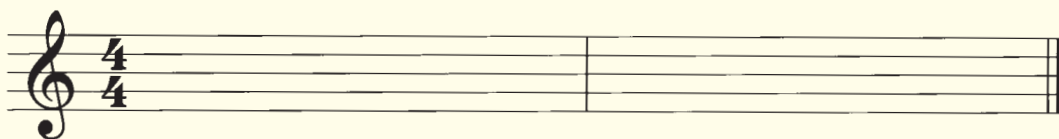
4. On the staff below, write **all of the notes for each** letter, including the new notes you have learned on this page.



C A E G F D B



EXPLORE Composers often write music on the staff and use symbols above and below the notes to indicate that these notes should be played an **octave higher** *8va* ----- or an **octave lower** *8va* ----- than what is written. Use ledger lines to write the actual notes that would be played in the following melody.



EXPLORE

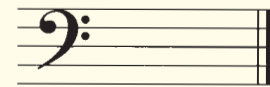


Listen to this musical excerpt on the **EXPLORATIONS** CD. Carefully observe the treble clef ledger line notes as you listen and analyze as explained below.

Valse Sentimentale by Franz Schubert

Allegretto

1. The music contains three treble clef ledger line notes that are higher than those learned on page 6. **Circle these new notes** in the example above.
2. The music contains one bass clef ledger line note that is higher than those learned on page 6. **Circle this new note** in the example above.
3. Write these new notes on the staves below. From what you have learned, discover and write the letter names under the notes.



4. Identify the letter names of the treble clef notes on the lines above the example.
5. Imagine this piece being performed by an orchestra. What instrument might play the treble clef melody? _____ The single bass notes? _____
What instrument group might play the bass clef chords? _____