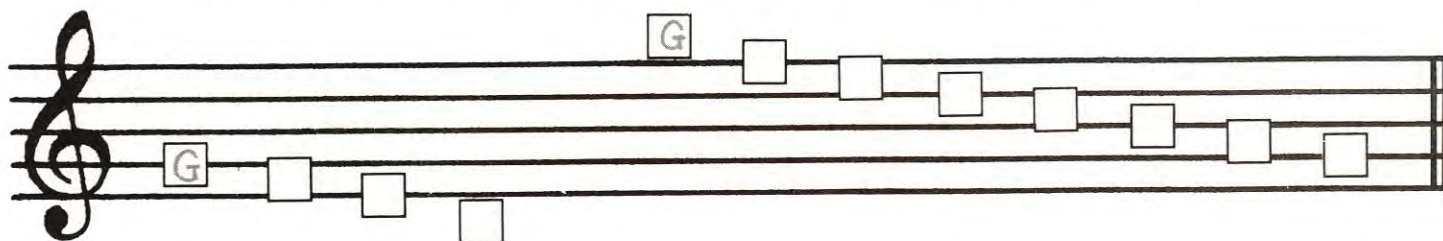


### 4. NAME LINES AND SPACES GOING DOWN

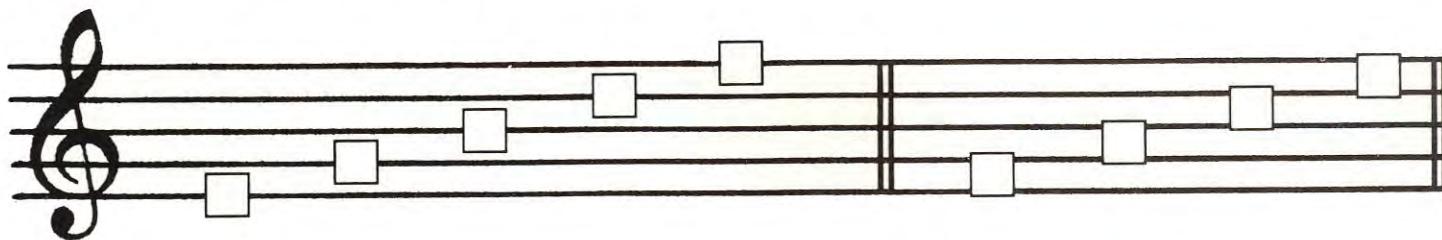
Going from high to low on the staff, the names of the lines and spaces use the musical alphabet in reverse (backwards) order: G F E D C B A.

Name each line or space in the boxes provided. Refer to the reverse order musical alphabet.



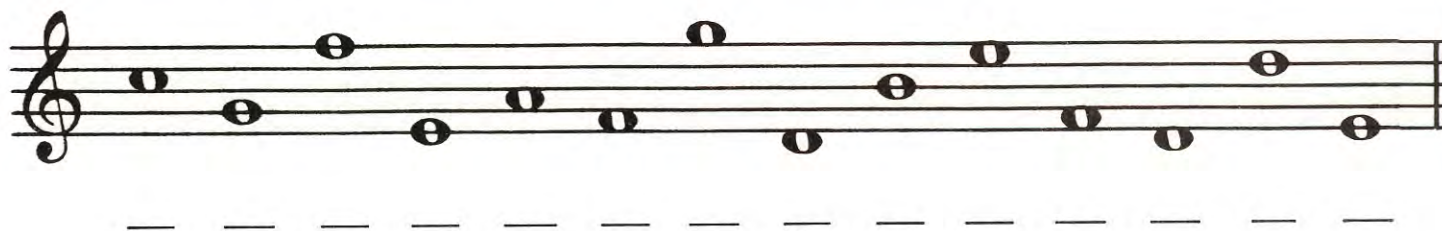
### 5. NAME LINES AND SPACES

Name each line or space in the box provided.



### 6. NAME NOTES

Write the name of each note on the blank provided.



### 7. DRAW STEMS

Notes that are on lines or spaces below the third line have stems pointing up: ♪. Notes that are on the third line and above have stems pointing down: ♫. Draw stems on each of the notes below. Be sure each stem points in the correct direction.

