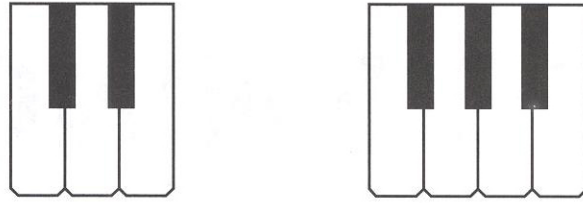


## Beginning Music Facts

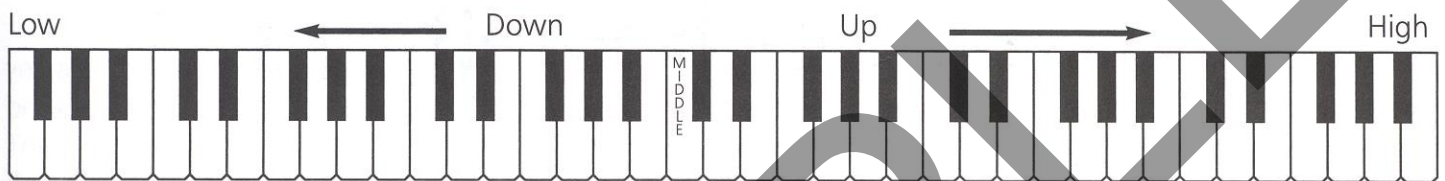
The piano keyboard has eighty-eight keys.

The black keys are in alternating groups of two and three.

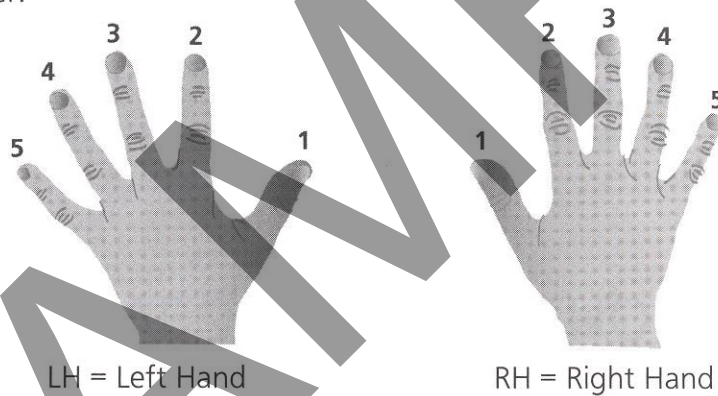


When you play to the left, it is called going down the keyboard.  
As you play down the keyboard, the sounds become lower.

When you play to the right, it is called going up the keyboard.  
As you play up the keyboard, the sounds become higher.



Each finger has a number:



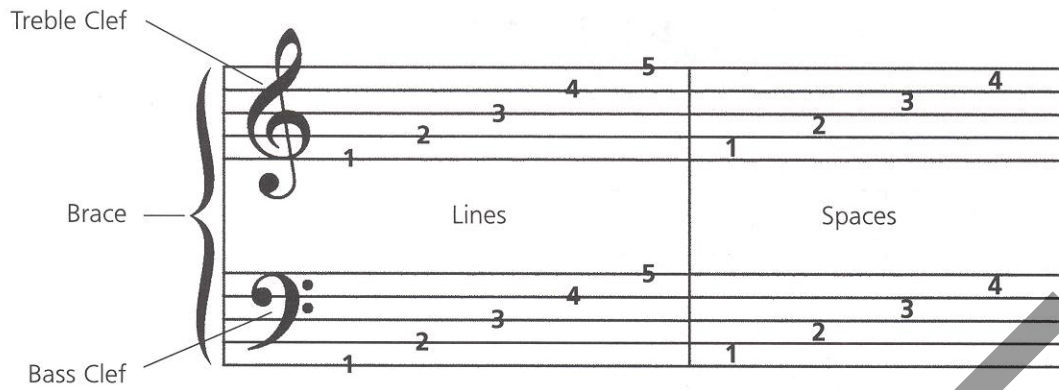
Music is made of sounds called notes. The way each note looks shows how short or long it will sound.



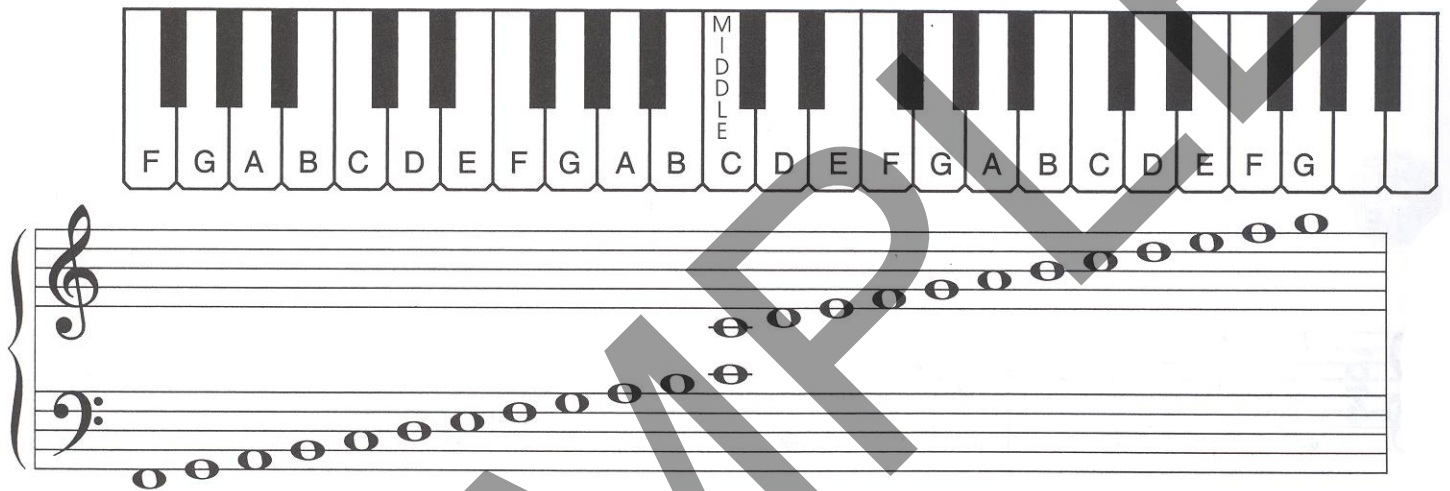
Signs for silence are called rests.



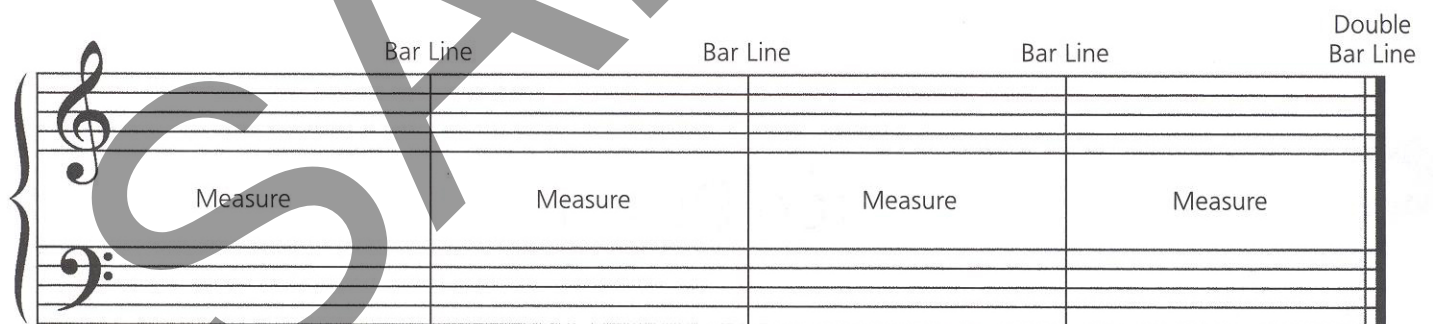
## The Grand Staff



## Notes on the Grand Staff



## Bar Lines and Measures



## Time Signatures

Two numbers written at the beginning of the staff are called the time signature. The top number tells how many beats are in each measure; the bottom number tells what kind of note gets one beat. In the time signatures below, the 4 on the bottom means the quarter note gets one beat.

$$\frac{2}{4}$$

(2 beats per measure)

$$\frac{3}{4}$$

(3 beats per measure)

$$\frac{4}{4}$$

(4 beats per measure)

# Which C?



Musical notation for the exercise "Which C?". It consists of two staves in 2/4 time. The treble clef staff starts with a whole note C4 (middle C) on the first line, marked with a "1". The bass clef staff has a whole rest on the first beat, followed by a whole note C3 (two ledger lines below) on the second beat, also marked with a "1". The exercise continues with alternating notes and rests in the treble staff and whole rests in the bass staff.

# Step Up



Musical notation for the exercise "Step Up". It consists of two staves in 2/4 time. The treble clef staff starts with a whole note C4 (middle C) on the first line, marked with a "1", followed by a whole note D4 on the second line, marked with a "2". The bass clef staff has whole rests throughout the exercise.

# Step Down



Musical notation for the exercise "Step Down". It consists of two staves in 2/4 time. The treble clef staff has whole rests throughout. The bass clef staff starts with a whole note C3 (two ledger lines below) on the second line, marked with a "1", followed by a whole note B2 on the first line, marked with a "2". The exercise continues with alternating notes and rests in the bass staff.

