

Unit 1

Note Values

Quarter Notes and Half Notes

1. Draw one line under each quarter note  and two lines under each half note  to show the number of beats each receives.

a) 

b) 

Stems on Notes

The stem on a note may go up on the right side  or down on the left side .

2. Draw up stems on these notes.

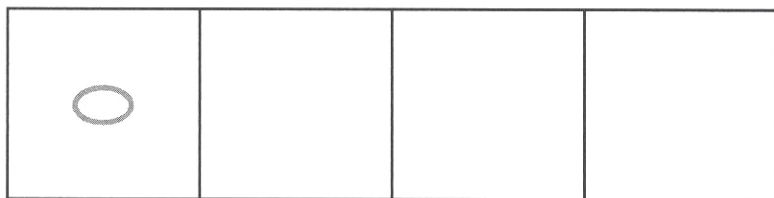





3. Draw down stems on these notes.



Whole Notes

4. Draw three whole notes.

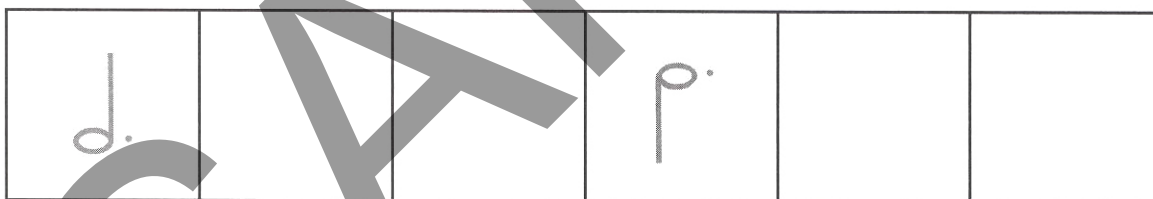


5. Draw one line , two lines , or four lines .



Dotted Half Notes

6. Draw two dotted half notes with up stems, then two with down stems.



7. Draw one line , two lines , or three lines .

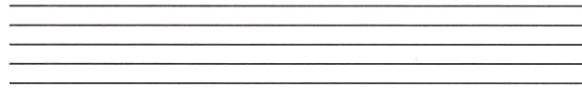


Unit 2

The Staff

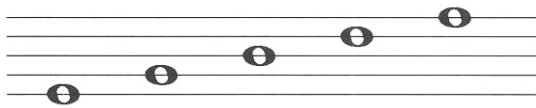
Lines and Spaces

Music is written on five lines called a staff.

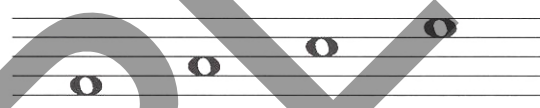


Notes are written on lines or in spaces.

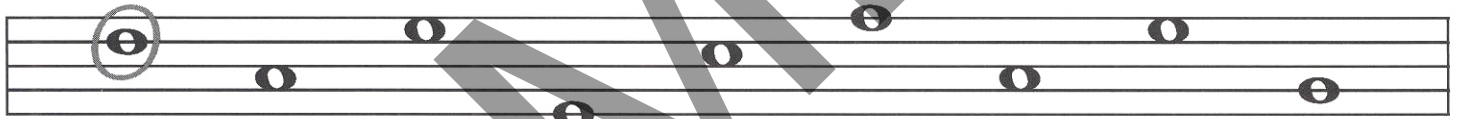
Line Notes



Space Notes



1. Circle the line notes.



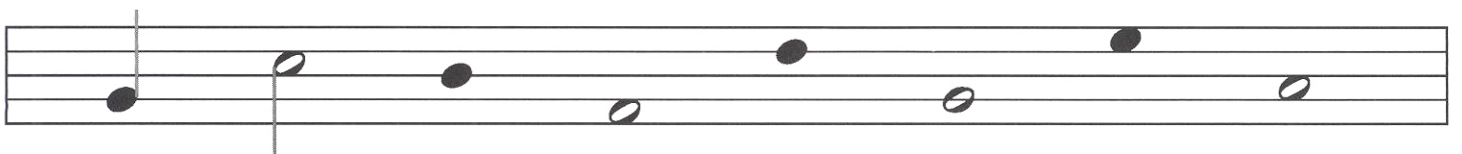
Up Stems

Down Stems

Notes below the third line have up stems.
Notes on or above the third line have down stems.



2. Draw stems on these notes.



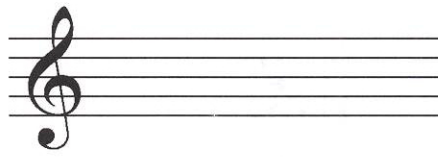
Clef Signs

A clef sign is used at the beginning of each staff.

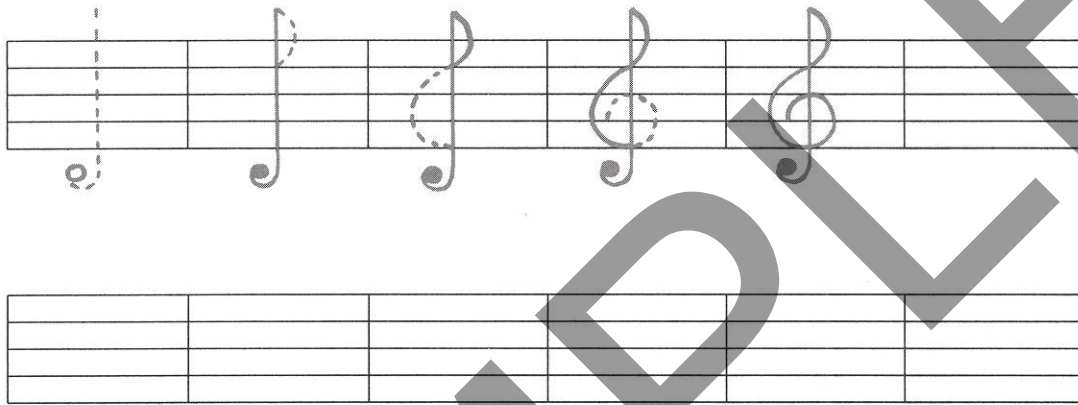
Treble Clef



Treble Staff



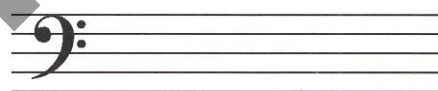
3. Trace these steps for drawing treble clef signs, then draw your own.



Bass Clef



Bass Staff



4. Trace these steps for drawing bass clef signs, then draw your own.

