

FUM, FUM, FUM

SETTING BY BRADLEY SOWASH

TRADITIONAL CATALAN CAROL

TUNE: VEINTICINCO DE DICIEMBRE

WORDS: AUTHOR AND TRANSLATOR UNKNOWN

SWING (♩ = 120-132)

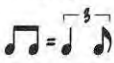


Ami Dmi E7 Ami E7 Ami

SOLO

Musical notation for the SOLO section, consisting of a grand staff with treble and bass clefs. The bass line contains a rhythmic pattern of quarter notes and eighth notes.

SWING (♩ = 120-132)



OPTIONAL DUET

Musical notation for the OPTIONAL DUET section, consisting of a grand staff with treble and bass clefs. The bass line contains a rhythmic pattern of quarter notes and eighth notes.

A

Ami Dmi E7 Ami E7 Ami E7

Musical notation for the first system of the vocal line, including lyrics: ON THIS JOY-FUL CHRIST-MAS DAY SING FUM, FUM, FUM.

A

Musical notation for the piano accompaniment of the first system, including a dynamic marking of *mf*.

9

Ami Dmi E7 Ami E7 Ami

Musical notation for the second system of the vocal line, including lyrics: ON THIS JOY-FUL CHRIST-MAS DAY SING FUM, FUM, FUM. FOR A

9

Musical notation for the piano accompaniment of the second system, including a dynamic marking of *mf* and a first ending bracket.