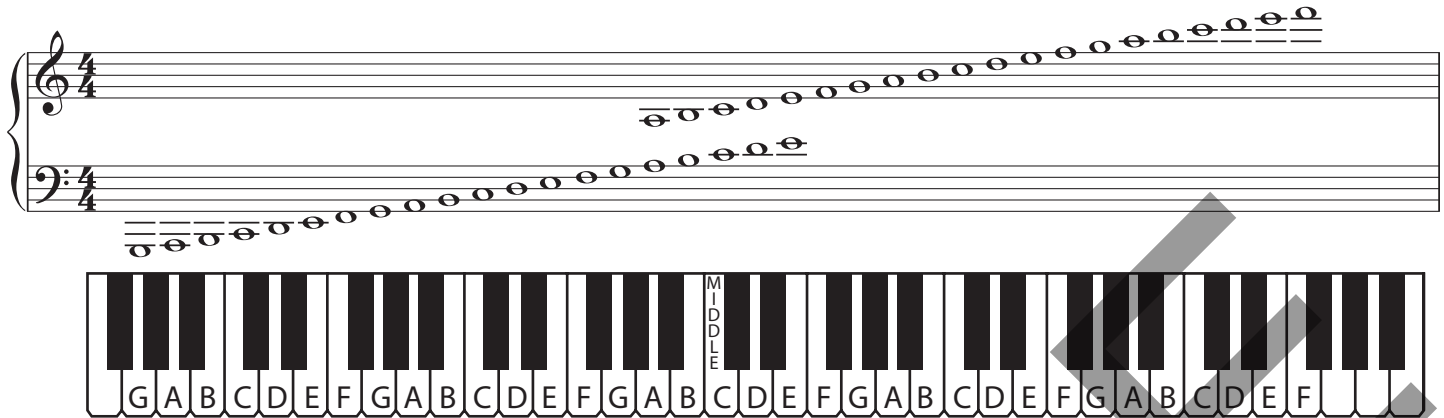
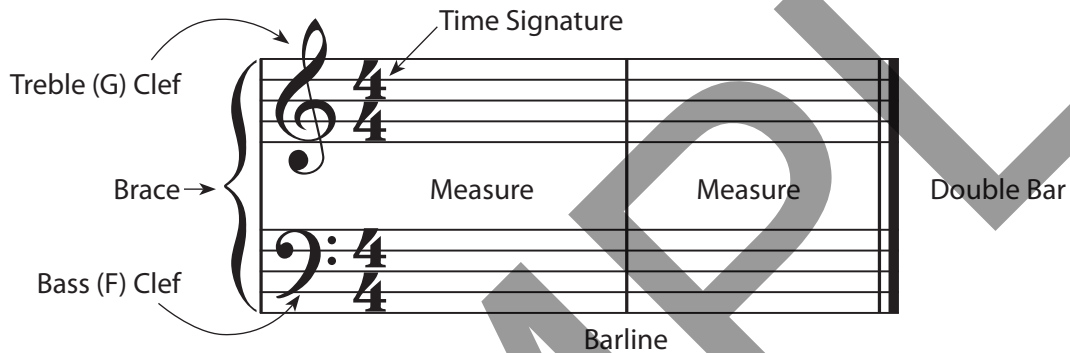


# MUSIC NOTATION GUIDE

## Keyboard and Staff Relationship



## The Grand Staff



## Stems and Beams



Notes on or above the 3rd line are written with DOWN stems.

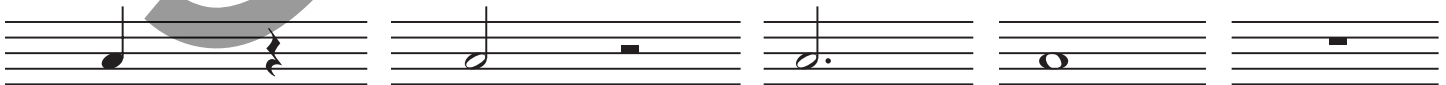
Notes below the 3rd line are written with UP stems.

Stems of beamed notes or chords are determined by the note farthest from the 3rd line.

## Time Signatures



## Notes and Rests



Quarter note

Quarter rest

Half note

Half rest

Dotted half note

Whole note

Whole rest



Two eighth notes



Eighth note

Eighth rest



Sixteenth note

Sixteenth rest

ISBN-10: 0-8497-7407-1 • ISBN-13: 978-0-8497-7407-2

© 2009 Kjos Music Press, 4382 Jutland Drive, San Diego, California 92117.  
International copyright secured. All rights reserved. Printed in U.S.A.