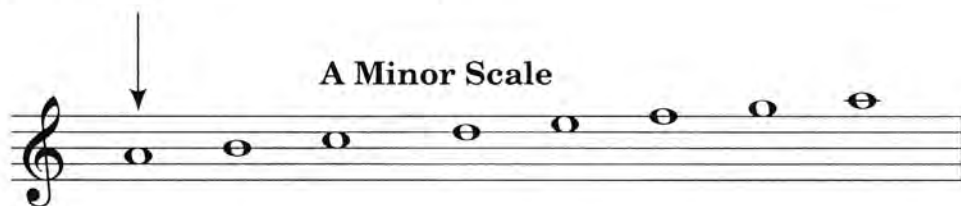
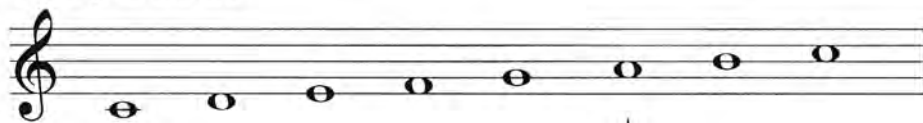


Relative Minor Scales

For every Major scale, there is a minor scale with the same key signature. Scales that share the same key signature are called **relatives**.

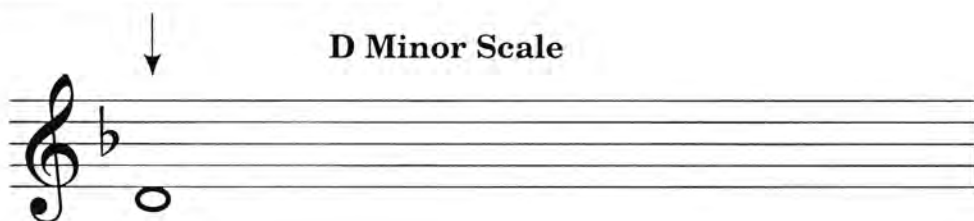
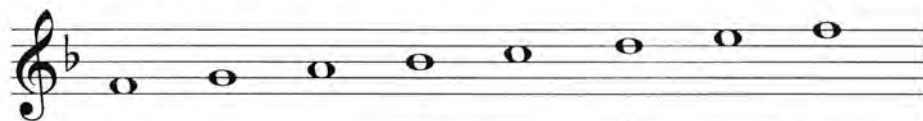
The sixth degree of the Major scale is the first degree of its relative minor.

C Major Scale



14. Draw the notes of the D minor scale.

F Major Scale



15. Draw the notes of the E minor scale.

G Major Scale

