

FOR THE FULL BAND

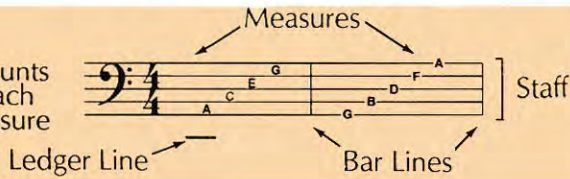
BASS CLEF

TIME SIGNATURE

WHOLE NOTE

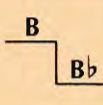
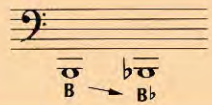
WHOLE REST


$\frac{4}{4}$ = 4 counts in each measure



A whole note gets 4 counts in $\frac{4}{4}$ time.

A whole rest gets 4 counts in $\frac{4}{4}$ time.


FLAT


A flat (b) lowers the pitch of a note one half step. It remains in effect for the entire measure.

1 TIME FOR BAND

The numbers indicate which valves should be pressed down.

▶ A double bar line marks the end of the music.

2 THE FUN CONTINUES

3 WHOLE LOTTA COUNTING

▶ Write in the counting and clap the rhythm before you play.

4 FOUR SCORE

Page 39

▶ When you see a page number followed by an arrow, *Excellerate* to the page indicated for additional studies.

5 MIX 'EM UP

6 MELTING POT

7 BAND ON PARADE



▶ Lines with a medal are *Achievement Lines*. The chart on page 47 can be used to record your progress.