

FOR THE FULL BAND

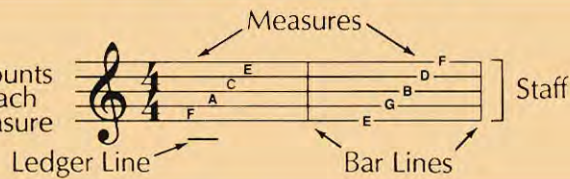
TREBLE CLEF



TIME SIGNATURE



$\frac{4}{4}$ = 4 counts in each measure



WHOLE NOTE

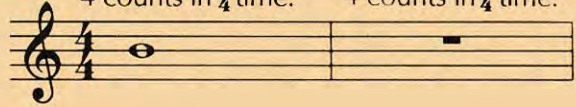


WHOLE REST



A whole note gets 4 counts in $\frac{4}{4}$ time.

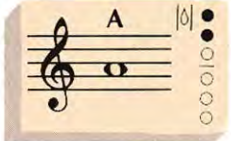
A whole rest gets 4 counts in $\frac{4}{4}$ time.



1 TIME FOR BAND



2 THE FUN CONTINUES



3 WHOLE LOTTA COUNTING



▶ Write in the counting and clap the rhythm before you play.

4 FOUR SCORE

Page 39



▶ When you see a page number followed by an arrow, *Excellerate* to the page indicated for additional studies.

5 MIX 'EM UP



6 MELTING POT



7 BAND ON PARADE



▶ Lines with a medal are *Achievement Lines*. The chart on page 47 can be used to record your progress.