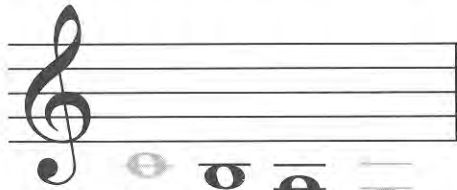




BECOME AN EXPERT, CONT.

M.



middle C

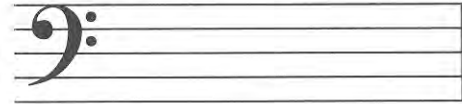


G below middle C

middle C



F above middle C

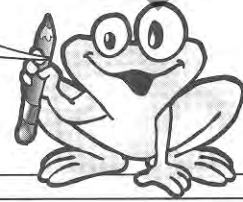


The last four notes!



N.

Before you name the rest of the notes, draw the guidepost notes. Remember, there are 12.



O.

SNOW DAY!

Oh, boy!
A sledding
vacation!



Color the hats, mittens, boots and sleds that belong to each note. I've given you a couple of hints. (Leave the guidepost notes gray.)



- Color all the D's Red.
- Color all the E's Blue.
- Color all the F's Yellow.
- Color all the A's Purple.
- Color all the B's Orange.
- Color all the G's Green.

The musical staff consists of two systems of treble and bass clefs. The first system has notes on the treble staff (D4, E4, F4, G4) and the bass staff (D3, E3, F3, G3). The second system has notes on the treble staff (A4, B4, C5) and the bass staff (A2, B2, C3). Various winter items are connected to these notes: hats, mittens, boots, and sleds. Some items are already colored (e.g., a hat with 'red' written on it, a sled with 'red' written on it). A large 'SAMPLE' watermark is overlaid on the page.