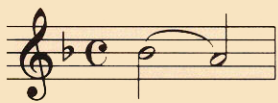


**SLUR**

A curved line that connects two or more notes of different pitches.

**PICK-UP NOTE**

A note that comes before the first full measure of a piece of music.

**56 WARM-UP**

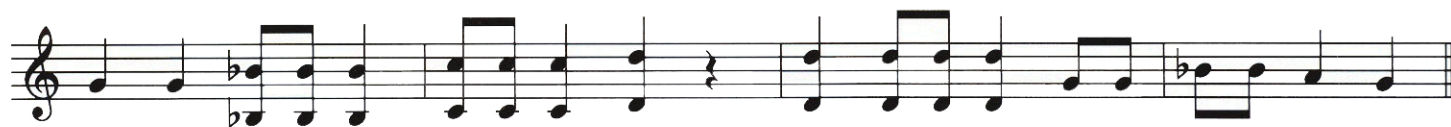
► Tongue only the first note of each slur. Try playing this warm-up on your mouthpiece.

**57 THEME FROM "SYMPHONY NO. 1"**

Johannes Brahms (1833 - 1897)

**57 THEME FROM "SYMPHONY NO. 1" - For French Horns Only****58 ERIE CANAL CAPERS** Page 39 

American Work Song

**58 ERIE CANAL CAPERS - For French Horns Only** Page 39 