

FOR THE FULL BAND

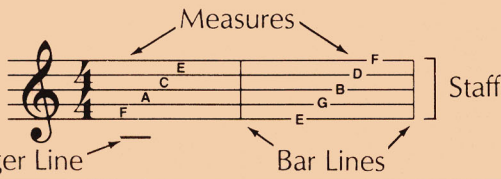
TREBLE
CLEF



TIME
SIGNATURE



$\frac{4}{4}$ = 4 counts
in each
measure



WHOLE
NOTE

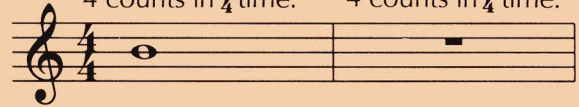


WHOLE
REST

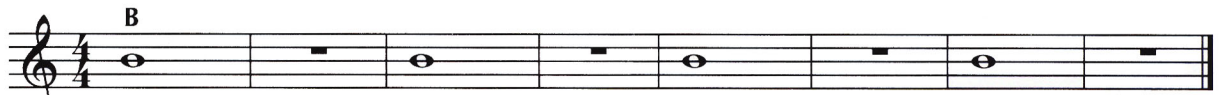


A whole note gets
4 counts in $\frac{4}{4}$ time.

A whole rest gets
4 counts in $\frac{4}{4}$ time.



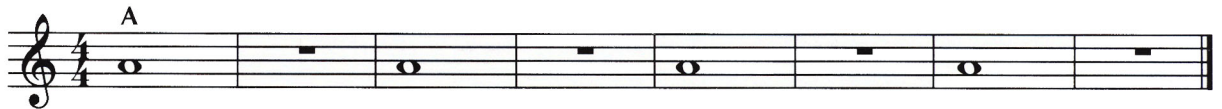
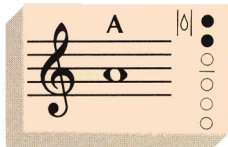
1 TIME FOR BAND



○ = open
● = pressed down

▶ A double bar line marks the end of the music. ↑

2 THE FUN CONTINUES



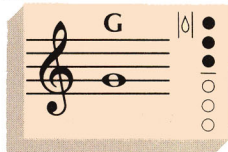
3 WHOLE LOTTA COUNTING



▶ Write in the counting and clap the rhythm before you play.

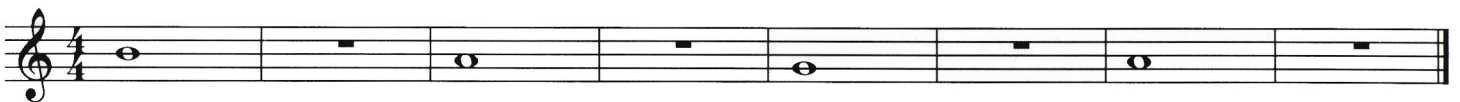
4 FOUR SCORE

Page 39

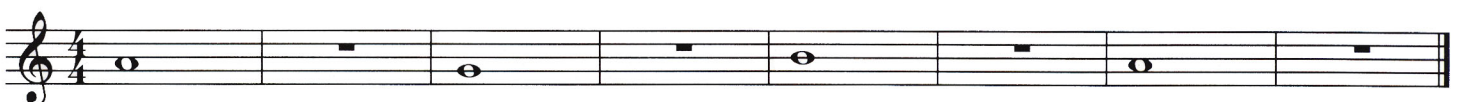


▶ When you see a page number followed by an arrow, *Excellerate* to the page indicated for additional studies.

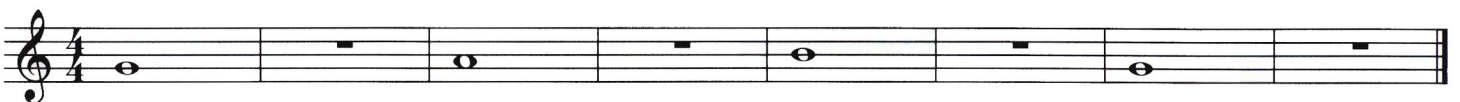
5 MIX 'EM UP



6 MELTING POT



7 BAND ON PARADE



▶ Lines with a medal are *Achievement Lines*. The chart on page 47 can be used to record your progress.