

# Figured Bass for Dominant Seventh Chords

Key of C (either Major or minor)

A **root position** Dominant Seventh Chord has a root, Major 3rd, Perfect 5th, and a minor 7th. Its figured bass is abbreviated to V7.

abbreviated to  $\frac{V7}{5 \ 3}$

28. Draw these root position Dominant Seventh chords. Name the key to which each belongs. (To find the key to which the Dominant Seventh chord belongs, count back a perfect fifth.) Play these chords.

A7	F7	E7	D7	E $\flat$ 7	A $\flat$ 7	B7
G7	B $\flat$ 7	D7	C7	F7	E7	E $\flat$ 7

The figured bass for the Dominant Seventh chord and its inversions is given below. (Notice that in the inversions, the root is the top note of the interval of the second.)  
**Memorize** the abbreviated numbers:  $V7 \frac{6 \ 4 \ 4}{5 \ 3 \ 2}$ .

Key of C (either Major or minor)

G7	G7	G7	G7
$\frac{V7}{5 \ 3}$	$\frac{V6}{5 \ 3}$	$\frac{V6}{4 \ 3}$	$\frac{V6}{4 \ 2}$
Abbreviated to V7	$\frac{V6}{5}$	$\frac{V4}{3}$	$\frac{V4}{2}$

29. Name these chords using the abbreviated figure bass shown in the example above. Play these chords.

Key of D	Key of B $\flat$
A7	F7

43. Write the figured bass for these music examples. Play them.

from *Sonatina, Op. 39 No. 1*, by Lyne  
Key of G

\_\_\_\_\_ of \_\_\_\_\_

from *Sonatina, Op. 39 No. 1*, by Lyne  
Key of C

\_\_\_\_\_ of \_\_\_\_\_

from *The Merry Farmer* by Schumann  
Key of F

\_\_\_\_\_ of \_\_\_\_\_

from *Sonatina in G* by Beethoven  
Key of G

\_\_\_\_\_ of \_\_\_\_\_

from *Arabesque* by Burgmüller  
Key of A Minor

\_\_\_\_\_ of \_\_\_\_\_

### Scale Degree Names

44. Write the scale degree names for these chords in F major. (Refer to page 10 if necessary.) Also write the figured bass for each chord. Play these chords.

Tonic

\_\_\_\_\_

\_\_\_\_\_

# Parallel Major and Minor Scales

A minor scale which begins on the **same** keynote as the Major scale is called parallel. The two scales have **different** key signatures.

B Major



b minor (Harmonic)



Draw the notes of the following parallel Major and Harmonic minor scales. Add the correct key signatures for each scale. Remember to raise the seventh tone of the Harmonic minor scale one half step. Play these parallel scales.

G Major



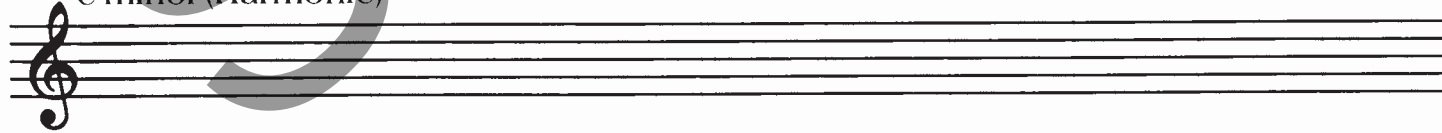
g minor (Harmonic)



E Major



e minor (Harmonic)



D Major



d minor (Harmonic)



# Final Review

1. Name these intervals. Use M for Major, m for minor, A for Augmented, dim for diminished. Play these intervals.

\_\_\_\_\_

2. Name these chords using chord symbols.

\_\_\_\_\_

3. Write the scale degree names.

\_\_\_\_\_

\_\_\_\_\_

\_\_\_\_\_

4. Draw the triads of the F Major scale. Write the correct Roman numeral below each chord. Write the correct chord symbol above each chord. Play these chords.

5. Draw the triads of the E Harmonic minor scale. Write the correct Roman numerals below each chord. Write the correct symbol above each chord. Play these chords.

6. Draw chords indicated by these figured basses. Play these chords.

D<sub>3</sub>      Eb<sub>4</sub>      Fm<sub>5</sub>      Bb<sub>4</sub>      G<sub>3</sub>      Ab<sub>4</sub>      Dm<sub>5</sub>

7. Write a Major and minor name for each key signature.

_____ Major	_____ Major	_____ Major	_____ Major
_____ minor	_____ minor	_____ minor	_____ minor