

Dynamics

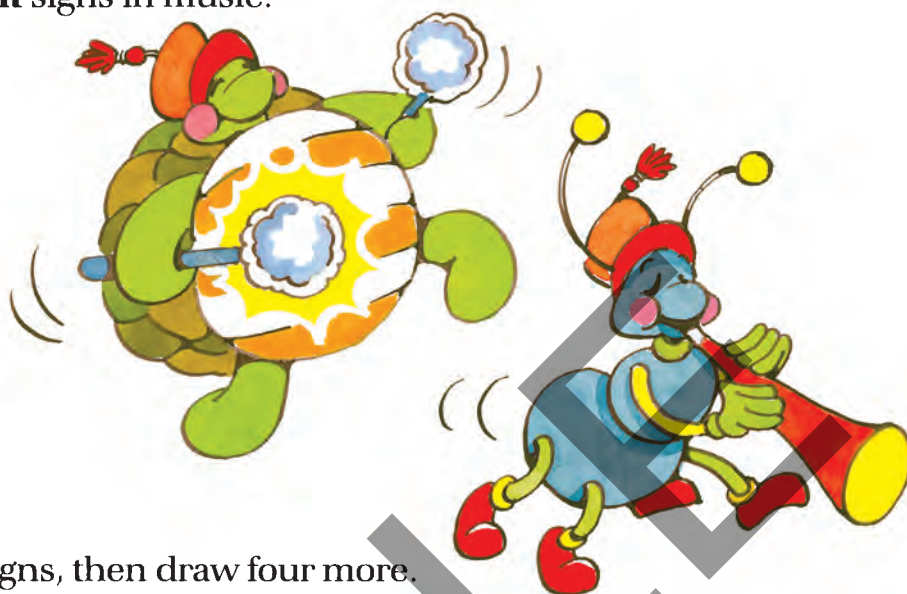
Dynamics are **loud** and **soft** signs in music.

f means **loud**.

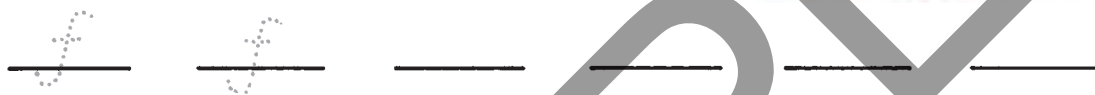
Its Italian name is ***forte***.

p means **soft**.

Its Italian name is ***piano***.



62. Trace the first two ***f*** signs, then draw four more.



63. Trace the first two ***p*** signs, then draw four more.



64. Read the words of this song.

At the beginning of each line, write the dynamic sign that matches the words of that line. Play this piece.

Our School Band

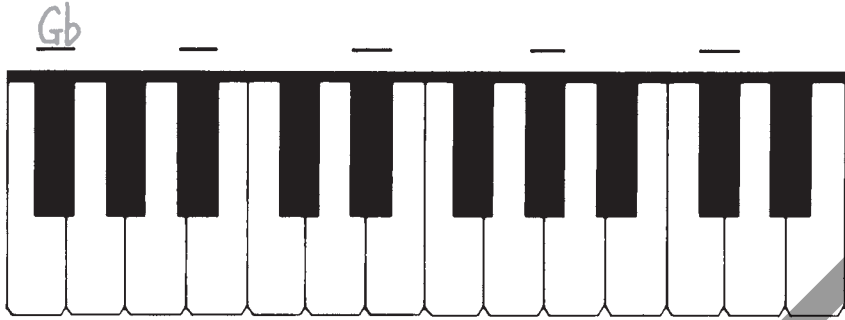
1

Hear the drum-mer play - ing loud. "Boom boom," goes the sound so clear!

5

Hear the clar - i - net so soft, pleas - ing to the ear.

116. Write the names of these flat keys. Play them.



117. Draw these flats on the staff. Play and name them.

Two musical staves. The top staff is in treble clef and contains five measures with flat symbols (b) placed above the notes: Bb, Eb, Ab, Db, and Gb. The bottom staff is in bass clef and contains five measures with flat symbols (b) placed below the notes: Gb, Db, Ab, Eb, and Bb.

The flat sign lasts for the **whole** measure.

A musical staff in 2/4 time. The first measure contains a flat sign (b) on the first line, with a quarter note on the first line. The second measure contains a quarter note on the second line. The third measure contains a flat sign (b) on the second line, with a quarter note on the second line. The fourth measure contains a quarter note on the third line. Below the staff, the text "(also Gb)" is written under the first measure and "(also Ab)" is written under the third measure.

118. Draw a flat before each note with a b sign over or under it. Play and name these notes.

Two musical staves in 2/4 time. The top staff is in treble clef and contains eight measures of music. Each measure has a flat sign (b) placed above the notes. The notes are: Gb (quarter), Ab (quarter), Bb (quarter), Cb (quarter), D (quarter), Eb (quarter), Fb (quarter), and Gb (half). The bottom staff is in bass clef and contains eight measures of music. Each measure has a flat sign (b) placed below the notes. The notes are: Gb (quarter), Ab (quarter), Bb (quarter), Cb (quarter), D (quarter), Eb (quarter), Fb (quarter), and Gb (half).