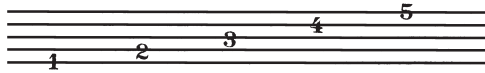


LESSON 1. Lines and Spaces on the Staff

A music STAFF has five LINES and four SPACES. The lines and spaces are numbered from the bottom to the top.

LINES



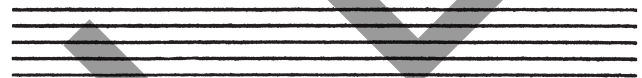
SPACES



Number the lines on this staff.



Number the spaces on this staff.



FIVE LINE NOTES and FOUR SPACE NOTES may be written on the staff.

LINE NOTES



SPACE NOTES



Line and space notes are written on these staves. Write L on the blanks below the line notes and S on the blanks below the space notes.

LESSON 11. Treble Clef Line and Space Notes (combined)

Write the letter names of these Treble Clef notes. The letter names spell words.

Three musical staves are shown, each with a treble clef and a series of notes. Below each staff is a dashed line for writing the letter names of the notes. The notes in the first staff spell out the word 'ACEB EDBE ADCAB'. The notes in the second staff spell out 'GAB CDEFG A B C D E'. The notes in the third staff spell out 'F G A B C D E F G A B C D'.

Draw a note above each letter name. Use half notes.

A musical staff with a treble clef and 12 empty measures. Below the staff are the letter names: A, C, E, B, E, D, B, E, A, D, C, A, B. The instruction is to draw a half note above each letter name.

Draw the exact Treble Clef notes described.

Use half notes.

A musical staff with a treble clef and 6 empty measures. Below the staff are the descriptions: E line, A space, G line, C space, B line, F space. The instruction is to draw the exact Treble Clef notes described using half notes.

Use quarter notes.

A musical staff with a treble clef and 6 empty measures. Below the staff are the descriptions: F space, E line, D line, A space, F line, E space. The instruction is to draw the exact Treble Clef notes described using quarter notes.