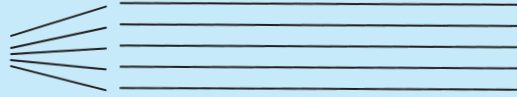


# THE STAFF: LINES AND SPACES

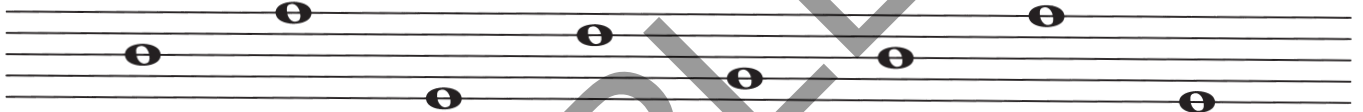
Music is written on a music **STAFF**. The staff is made up of **LINES** and **SPACES**.

**LINES**



1. Count the number of **lines** you see on the staff above. There are \_\_\_\_\_ lines.

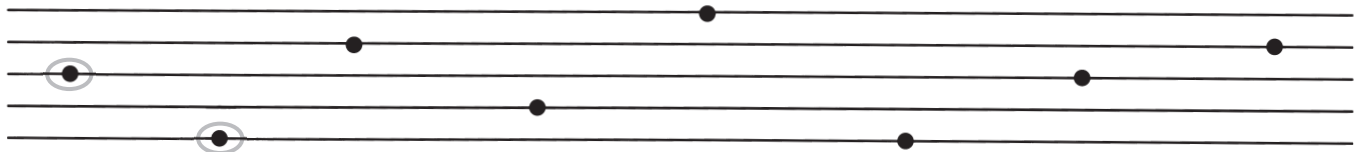
The notes below are written on the **lines** of the staff. A line goes through the **middle** of each note.



2. Draw notes on the single line below. Remember, **the line goes through the middle of each note**.



3. Now draw notes on all the **lines** of the staff below by making a circle around the dots given. The first two notes are drawn as examples.



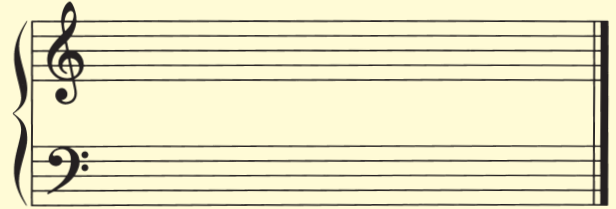
4. Notes written correctly on the **lines** of the staff **have the line going exactly through the middle of the note**. Draw an **X** on all the line notes that are drawn **incorrectly** on the staff below.



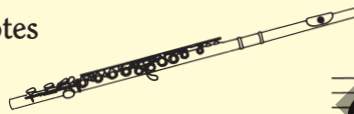
# EXPLORE



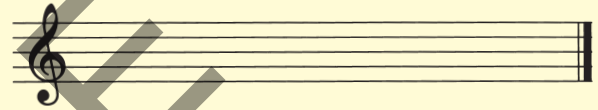
The notes written in the **TREBLE STAFF** and the **BASS STAFF** describe sounds of many instruments as well as sounds we sing. Keyboard instruments such as the piano, organ, or synthesizer use the treble staff and bass staff together to make a **GRAND STAFF**:



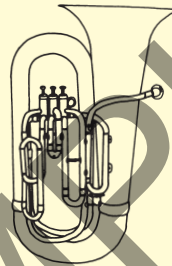
Some instruments play only notes that sound **HIGH**. These instruments use the **TREBLE STAFF** for their music.



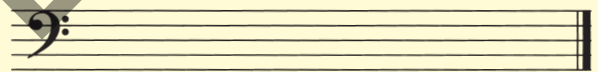
**TREBLE STAFF**




Some instruments play only notes that sound **LOW**. These instruments use the **BASS STAFF** for their music.


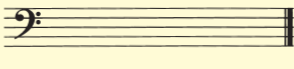
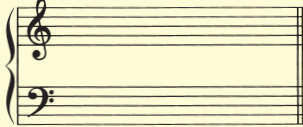


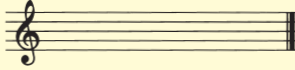
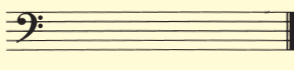
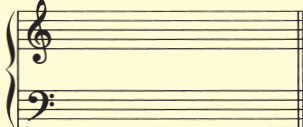
**BASS STAFF**

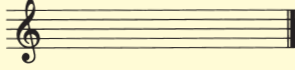
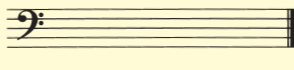
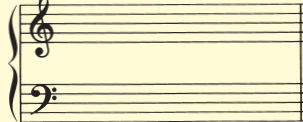


The **EXPLORATIONS** tape is used whenever you see the  symbol on the page. Listen to the tape for examples of sounds of different instruments that play **high** notes, **low** notes, and the full range from **high** to **low**.

1. Circle the **staff** you think would be used for the instruments you hear.



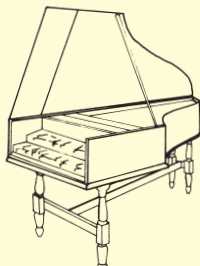
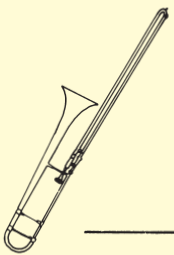

A.   

B.   

C.   




**EXPLORE BONUS** Which instruments did you hear on the tape? Write the correct letter names beside the pictures.

 \_\_\_\_\_  \_\_\_\_\_  \_\_\_\_\_  \_\_\_\_\_  \_\_\_\_\_

# PRACTICE PAGE



You can have fun solving a few problems on this Practice Page. Each example has a different problem that needs your help. Good Luck!

1. Help! The measures below are missing notes and we need your help to **fill each measure to match the correct number of beats with** . The **time signatures** will give you a musical clue.



A.

$\frac{3}{4}$  

1 2 3 1 2 3 1 2 3 1 2 3

B.

$\frac{4}{4}$  

1 2 3 4 1 2 3 4 1 2 3 4

C.

$\frac{3}{4}$  

1 2 3 1 2 3 1 2 3 1 2 3

D.

$\frac{4}{4}$  

1 2 3 4 1 2 3 4 1 2 3 4

2. Another problem! The measures below are missing the counts below each measure. **Write the correct counts**, looking at the **time signature** and notes in each measure.

A.

$\frac{3}{4}$  

Write the counts: \_\_\_\_\_

B.

$\frac{4}{4}$  

Write the counts: \_\_\_\_\_

## LESSON

## 8

## LISTEN, AND CREATE RHYTHMS

You are ready to listen to rhythms like a **MUSICAL DETECTIVE!**



1. Listen to the **EXPLORATIONS** tape for rhythms that may be the **SAME** or **DIFFERENT** from the rhythms written below. Circle the correct answer.

A.



B.



C.



D.



Rhythms have a natural **ACCENT** or stronger beat on the first beat of the measure.

2. Listen to the following examples on the **EXPLORATIONS** tape.

ACCENT



**STRONG** weak weak weak **STRONG** (weak) weak weak

ACCENT



**STRONG** weak weak **STRONG** (weak) weak

3. Listen to the **EXPLORATIONS** tape for examples of rhythms in  $\frac{4}{4}$  and  $\frac{3}{4}$ . Circle what you hear.

A.  $\frac{4}{4}$   $\frac{3}{4}$  C.  $\frac{4}{4}$   $\frac{3}{4}$

B.  $\frac{4}{4}$   $\frac{3}{4}$  D.  $\frac{4}{4}$   $\frac{3}{4}$



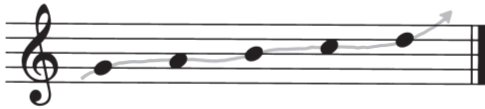
# MELODY SHAPES

Music is made up of notes that move up and down the staff. This movement makes a shape that is called a **MELODY**. Melodies move by **STEPS** and **SKIPS**.



The **EXPLORATIONS** tape will play the **MELODY SHAPES** below. As you listen, trace the melody with your pencil point. All melodies will be moving by **steps**.

Melody moving **UP** by **STEPS**.



Melody moving **DOWN** by **STEPS**.



Melody moving **UP and DOWN** by **STEPS**.



Melody using **REPEATED** notes.



1. **Melody shapes:** Listen and trace these melodies that combine the shapes from above.

A.



B.



C.



2. **Your turn!** Draw a melody shape on the staff below using only steps. The starting note is written. Play this melody on your instrument.

